



# CAMP JUGGERNAUT

EMPOWERING KIDS TO BE FUTURE WORLD CHANGERS

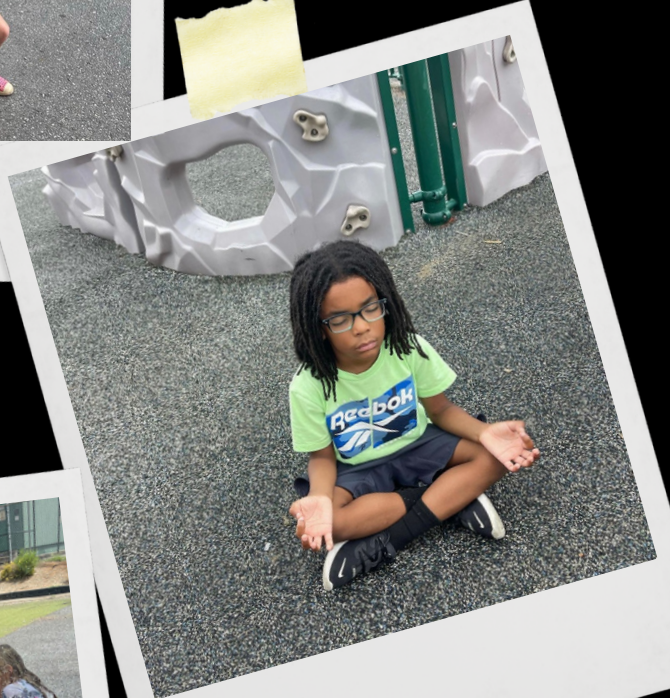


# jug-ger-naut

**Noun**

**A huge, powerful, and  
overwhelming force.**







# **CAMP JUGGERNAUT MISSION:**

**TO EMPOWER AND INSPIRE  
KIDS TO FIND THEIR  
PURPOSE, INNER FORCE AND  
CONFIDENCE SO THEY CAN  
GROW TO BECOME  
INTENTIONAL AND  
INTELLIGENT PEOPLE OF THE  
COMMUNITY.**



# OUR BELIEFS

- WE VALUE AUTONOMY AND MEETING EACH CHILD WHERE THEY ARE.
- WE BELIEVE IN INSPIRING AND MOTIVATING KIDS TO BE THEIR BEST.
  - WE BELIEVE ALL CAMPERS SHOULD BE KIND TO EVERYONE.
- WE BELIEVE IN GIVING THE CHILD A VOICE REGARDING THEIR DAY.
  - WE BELIEVE IN FREE PLAY AND SELF EXPRESSION.
- WE BELIEVE IN AN OPEN DOOR POLICY WITH PARENTS VISITING CAMP AS WELL AS FOR CAMP FEEDBACK.
  - WE BELIEVE EVERY CHILD IS SPECIAL AND AMAZING.
  - WE WANT TO HELP EVERY CHILD FIND THEIR PURPOSE.
    - WE KEEP CAMPER SAFETY AS OUR #1 PRIORITY.



# **CAMP WEEKS**

**JUNE 10-14**

**JUNE 17-21**

**JUNE 24-28**

**JULY 1-5**

**JULY 15-19**

**JULY 22-29**

**AUG 5-9**

**AUG 19-23**



# **CAMP OPTIONS**

**HALF DAY CAMPERS**

**9AM-3PM**

**\$299/WEEK**

**FULL DAY CAMPERS**

**8AM-6PM**

**\$399/WEEK**



**LIONCLAW**

AGES 5-6



**LEOKNIGHTS**

AGES 7-8



**CAMP  
JUGGERNAUT**



**BRAVEHEARTS**

AGES 8-9



**NOBLESTEED**

AGES 9-11





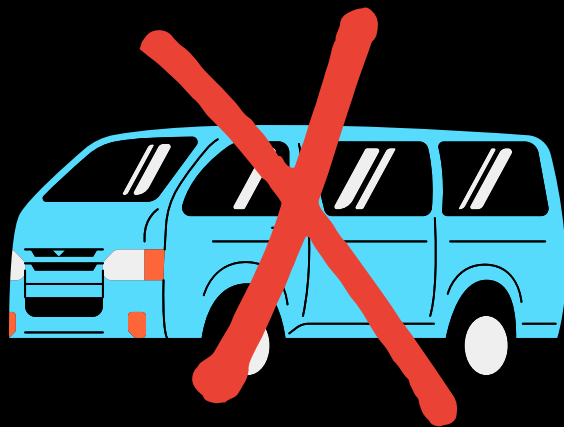
# NOT IN THIS CAMP



**NO SCREEN TIME**



**NO BULLYING**



**NO DRIVING OFF SITE  
OR FIELD TRIPS**



# MONDAY SLIME DAY

[CAMPJUGGERNAUT.COM](http://CAMPJUGGERNAUT.COM)



  
**CAMP  
JUGGERNAUT**

# **TUESDAY** **SPORTS DAY**

**CAMPJUGGERNAUT.COM**



# WEDNESDAY ICE CREAM TRUCK

[CAMPJUGGERNAUT.COM](http://CAMPJUGGERNAUT.COM)



# WEDNESDAY WATER PLAY

[CAMPJUGGERNAUT.COM](http://CAMPJUGGERNAUT.COM)



  
**CAMP  
JUGGERNAUT**

**THURSDAY**  
**JUMP DAY**

**CAMPJUGGERNAUT.COM**



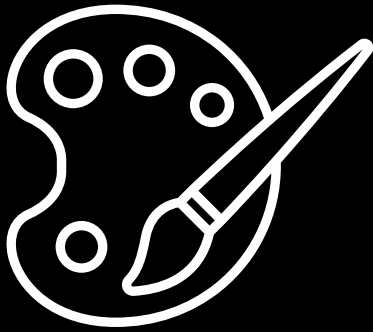
**CAMP  
JUGGERNAUT**

# **FRIDAY COLOR RUN**

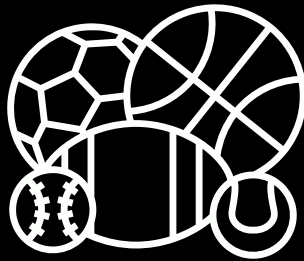
**CAMP  
JUGGERNAUT  
.COM**



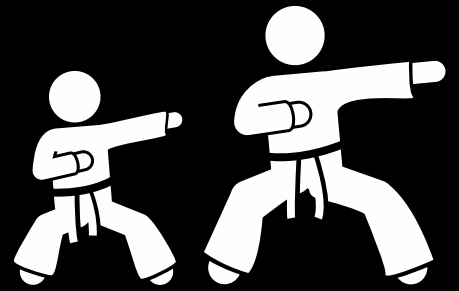
# DAILY OFFERINGS



**ART  
CLASS**



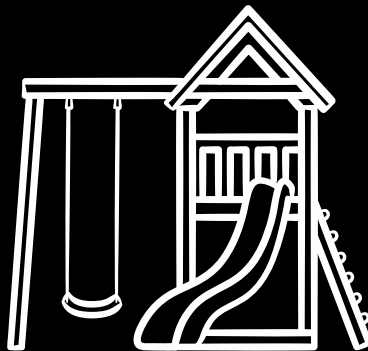
**SPORTS**



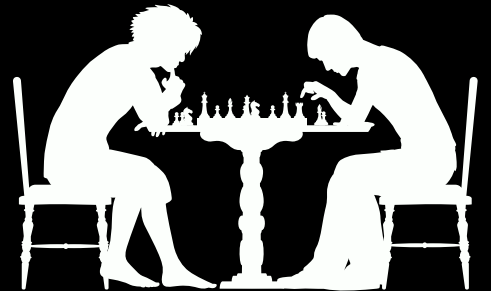
**MARTIAL  
ARTS**



**READING  
REWARDS**



**OUTDOOR  
PLAY**



**BOARD  
GAMES**





# COACH REQUIREMENTS

WE TAKE THE SAFETY OF OUR CAMPERS VERY SERIOUSLY.  
WE ALSO LOOK TO HIRE COACHES WHO ARE POSITIVE,  
HIGH ENERGY AND SUPER FUN WITH KIDS!

OUR COACHING REQUIREMENT:

MUST PASS FULL BACKGROUND CHECK

CAMP LEADERS MUST BE CPR CERTIFIED

UNDERGO CAMP JUGGERNAUT COACH TRAINING (4HRS)

PROVIDE 3 CHARACTER WITNESSES

PROVIDE 2 REFERRALS OF WORKING WITH KIDS

POSITIVE ATTITUDE

NO PHONES EXCEPT ON PHONE BREAK



# CAMP LOCATION

WOODLAWN COMMUNITY FELLOWSHIP  
737 E WOODLAWN RD  
CHARLOTTE, NC 28209

CLOSE TO UPTOWN, DILWORTH, SOUTHPARK





# IMPORTANT DATES

**JANUARY 25TH: REGISTRATION OPENS TO THE PUBLIC**

**MARCH 1ST: CAMP TUITION INCREASE**

**MAY 1ST: CAMP E-PACKETS SENT OUT**

**JUNE 1ST: WAIVERS AND PAPERWORK DUE**

**JUNE 10TH: FIRST DAY OF CAMP!**

**ENROLL:**

**CAMP  
JUGGERNAUT  
.COM**